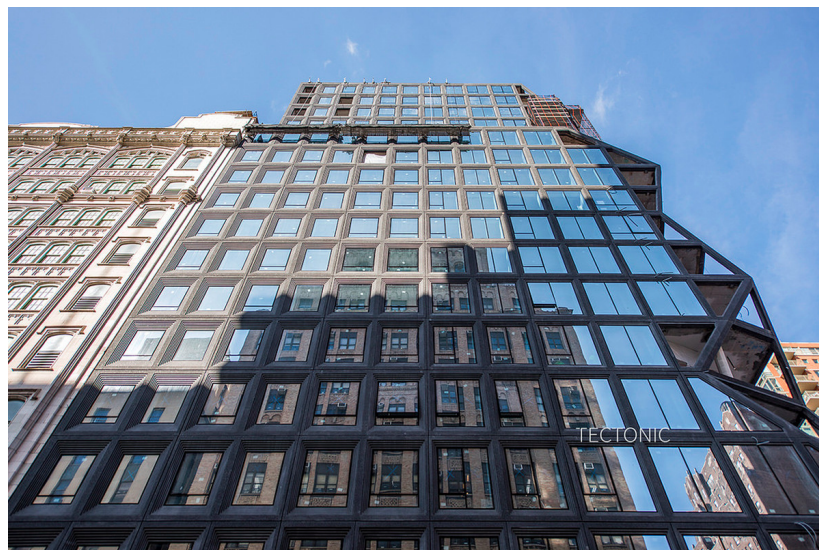




Checking in on Two Condos on the Rise in Gramercy

See how far OMA's prismatic condo and BKSK Architect's 21-story building are coming along

By **Tanay Warekar**
Impressions 668,712



Via [Tectonic Photo](#)

Two new Gramercy projects have made significant progress in recent months, construction site photos by [Tectonic](#) reveal. The first of the two is OMA's prismatic condo building at 121 East 22nd Street; when [we last checked in](#) with the site, the taller of the two towers that make up this development was starting to get its facade.

Now, five months later, most of the facade work looks complete, and just some of the angular facade elements of the building still need to be fitted with windows. OMA's first NYC residential project is led by partner Shohei Shigematsu, and features 133

apartments spread between two buildings that are connected by a courtyard. The shorter of the two towers was nearing completion in September last year.

The Toll Brothers City Living-developed project launched sales in January last year with apartments asking from \$1.5 million. Dozens of apartments here are now in contract, according to StreetEasy, and of the ones that remain, prices range from \$1.41 million, and go up to \$5.99 million. The first closings will begin in December, and the project will fully wrap construction in January.



Meanwhile just a few blocks away, the BSK Architects-designed condo at 200 East 21st Street has also made progress since we last checked in with the site in August last year. The 21-story building has since topped out, and is now largely covered in its white brick and glass facade.

Sales on the building's 67 apartments launched in October last year with apartments asking from \$1.4 million. Currently available units range from \$1.475 million to \$4.15 million, according to StreetEasy.

NY.Curbed.com

February 27, 2018

Construction on this condo is expected to wrap shortly before the end of the year, and move-ins will get underway soon after that. The project is being developed by Alfa Development and will feature interiors by Champalimaud.

<https://ny.curbed.com/2018/2/27/17058100/gramercy-oma-construction-bksk-condos>