

September 19, 2018

Lux Exposé



## A Look Inside 200 East 21st Street, a New Sustainable Luxury Condominium in NYC

**2**00 East 21st Street is a new sustainable luxury condominium in the historic Gramercy neighborhood in New York City. The condominium building is located at the corner of 21<sup>st</sup> Street and Third Avenue in Manhattan's Gramercy neighborhood. It is the fifth building in Alfa's Green Collection of sustainable residential developments and is targeting LEED Gold Certification.

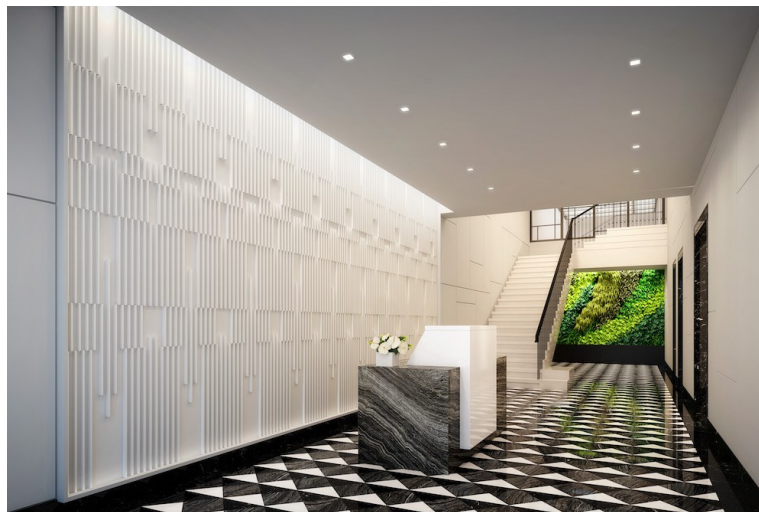


September 19, 2018

## Lux Exposé



Developed by leaders in green building Alfa Development, 200 East 21st Street in Gramercy is a luxury condominium collection of 67 homes designed by BSKS Architects with interiors by Alexandra Champalimaud. The building is part of Alfa Development's Green Collection of Sustainable Properties, targeting LEED Gold Certification (which is more rigorous each year).



The building features a variety of impressive eco-friendly and beneficial features including a vertical living green wall in the lobby, a landscaped communal roof terrace designed by Halsted Welles Associates that provides natural insulation and reduces "heat island effect", a solar-powered domestic water production system that provides 65% of the building's hot water, wind-generated electricity, a lifetime's supply of energy saving LED bulbs to residents, a rainwater collection system that collects 3,500 gallons of rainwater used to irrigate plantings, and filtered drinking water in all residences (say goodbye to bottled water!), to name a few. Sophisticated interiors are finished with elegant, eco-friendly materials including FSC-certified wood as well as advanced water-conserving fixtures, faucets, and appliances.

September 19, 2018

Lux Exposé



The BKSK-designed exterior is characterized by glass and traditional stonework, a homage to the brick and limestone facades of the Gramercy neighborhood. Interiors are elegantly created by Champalimaud with high-end, high-quality fixtures and finishes, which are important to Alfa Development.



September 19, 2018  
Lux Exposé



September 19, 2018

Lux Exposé



The 67 residences at 200 East 21 Street range from one- to three-bedrooms, including a four-bedroom penthouse. Sophisticated interiors are finished with elegant and timeless materials throughout, such as grand oak entry doors, wide plank oak flooring in Alfa's custom smoked oil stain and solid wood interior and pocket doors with Valli & Valli brushed nickel door hardware.

September 19, 2018

Lux Exposé



As CEO and Founder of Alfa Development, Michael Namer has built nearly a billion dollars in real estate in Manhattan since 1980 and his commitment to sustainable development is what really sets him apart. He started the Green Collection in 2007 – he is truly committed to environmentally conscious building and a pioneer in the field, setting the example for others.

<https://luxexpose.com/a-look-inside-200-east-21st-street-a-new-sustainable-luxury-condominium-in-nyc/>